

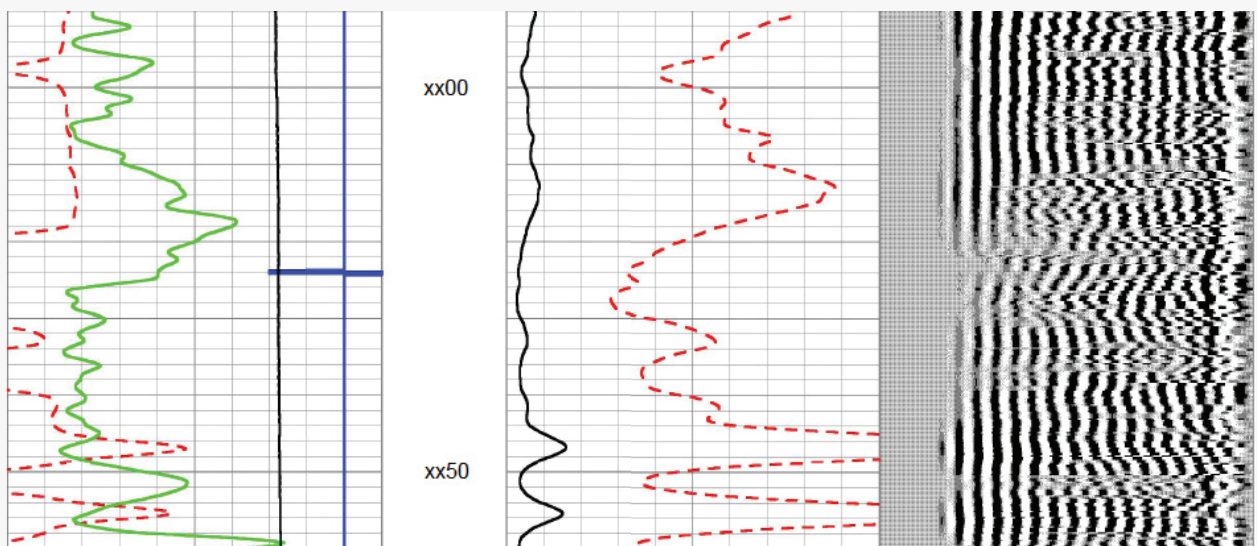
# Radial Bond Tool



The Ultra High Speed Hybrid Radial (UHSRH) tool evaluates the cement bond quality and integrity to both pipe and formation by providing the measurements of the cement bond amplitude (CBL) through near receiver (3-ft crystal), and variable density log (VDL) through far receiver (5-ft Crystal). UHSRH tool also provide a cement map through six (eight) (twelve) segmented receivers, each segment covers 60° (45°) (60°) section of the pipe. All sonic data is captured and stored at 1µs sample rate digitally within 2ms after the transmitter fires allowing flexibility of the output telemetry. The has a built in TOP SIDE LOCATOR (optional) which determines the top of the tool during logging.

The telemetry can handle the Hybrid Memory / Real Time mode at the same time, the UHSRH can run as Combo with the Multifinger Caliper 40 or 56 arms, The data can be uplink in Real time at a high baud rate (100kbaud to 400kbaud), all the data is digitalized, transmitted and storage in 32 Gbytes of memory continuously over 18 hours. The tool be can run as standalone memory tool with slickline units.

UHSRH runs with Scientific Data Systems panels and their software Warrior.



For enquires please contact our distributor:

**Flowlift Inc.**

**5920 MacLeod Place I, Suite 620, Calgary, AB T2H 2G4**  
**www.flowlift.com info@flowlift.com Tel. +1 (403) 251-3808**

## Radial Bond Tool Specifications:



Model	UHSHR 1-11/16"	UHSHR 2-3/4"	UHSHR 3-1/2"
Pressure rating	17,000 psi (117.2Mpa)	17,000 psi (117.2Mpa)	17,000 psi (117.2Mpa)
Temperature rating	350°F (177°C)	350°F (177°C)	350°F (177°C)
Tool diameter	1-11/16 in (42.8mm)	2-3/4 in (68.8mm)	3-1/2 in (68.8mm)
Tool Length	under 14.7 ft. (4.475m)	under 13 ft. (4m)	under 13 ft. (4m)
Tool Weight	73lbs (33.0kg)	150lbs (68kg)	230lbs (104.3kg)
End threads (Top/Bottom)	1 -3/16 -12 Go Pin/Box	1 -3/16 -12 Go Pin/Box	1 -3/16 -12 Go Pin/Box
Tool Mode	Hybrid Real time, and Memory / or Memory	Hybrid Real time, and Memory / or Memory	Hybrid Real time, and Memory / or Memory
Power Tool Bus	100VDC to 130VDC	100VDC to 130VDC	100VDC to 130VDC
ToolBus	OWB 1.5Mbps	OWB 1.5Mbps	OWB 1.5Mbps
Sample Rate	1µs	1µs	1µs
Internal Memory	32 GBytes	32 GBytes	32 GBytes
Current Consumption	90mA @ 130VDC	90mA @ 130VDC	90mA @ 130VDC
Sensor Measure Point	Near @ 3ft, Far@ 5ft, Radial@ 2ft.	Near @ 3ft, Far@ 5ft, Radial@ 2ft.	Near @ 3ft, Far@ 5ft, Radial@ 2ft.
Transmitter	1.2 in, Dia. Omni	2 in, Dia. Omni	2-5/8 in, Dia. Omni
Receivers	Near&Far =1.2 2 in. Omni, Radial= 6 Segments	Near&Far = 2 in. Omni, Radial= 8 Segments	Near&Far = 2-5/8 in. Omni, Radial= 12 Segments
Recommend Max. Casing ID	7.0 in. (177.8mm)	10.75 in. (264mm)	13.625 in. (346mm)
Recommend Min. Casing ID	2.0in. (50.8mm)	3.5 in (89mm)	5.25 in (140mm)
Borehole Fluids	Oil-Fres Water -Brine	Oil-Fres Water -Brine	Oil-Fres Water -Brine
Tool Positioning	Must be Centralized	Must be Centralized	Must be Centralized
Logging Speed	30 ft/min (9.1 m/min)	30 ft/min (9.1 m/min)	30 ft/min (9.1 m/min)

For enquires please contact our distributor:

**Flowlift Inc.**  
**5920 MacLeod Place I, Suite 620, Calgary, AB T2H 2G4**  
**www.flowlift.com info@flowlift.com Tel. +1 (403) 251-3808**